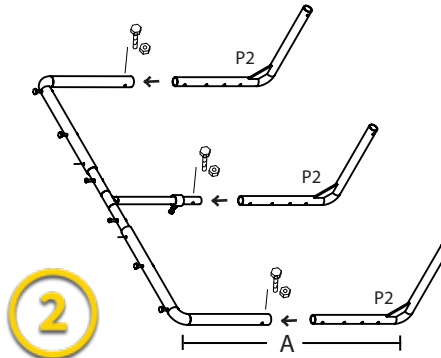


1

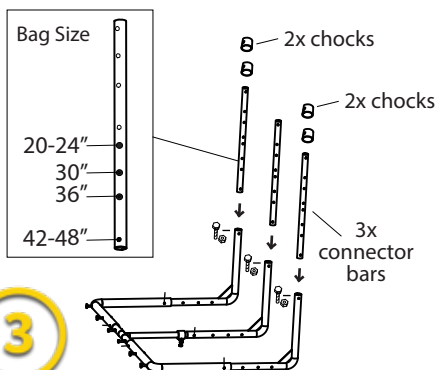
Build first top section (P1 & P3). Connect with a P5 & P8. Length should be 110.5". Add 1 chock (P6) to the tee (P3) with a 3" bolt (P7).



2

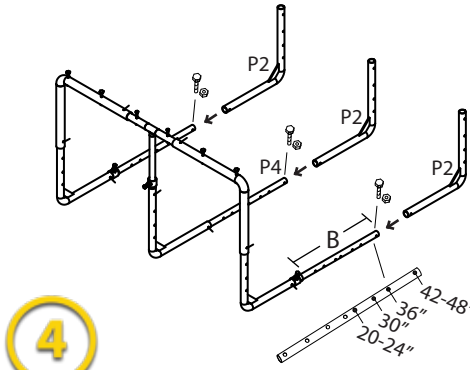
Add 3 bottom corners (P2). Measure to achieve required height (A). Use a P5 & P8 to attach each corner.

20"-48" Frame Dimensions				
PipeSak	Pipe OD	A	B	C
QF20-24	20"-24"	46"	12"	68.5"
QF30	30"	51"	16"	83"
QF36	36"	59"	20"	92"
QF42-48	42"-48"	67.5"	24"	110"



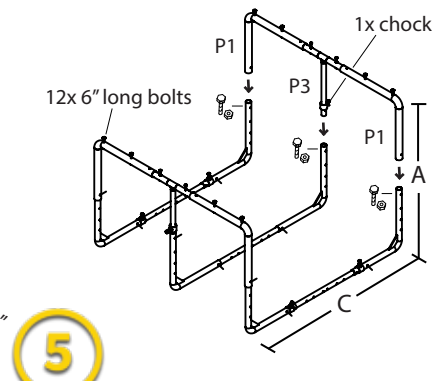
3

Add 3 straight connector bars (P4). Add 2 chocks (P6) per outer bar. Select width (B) for the correct bag size then secure each bar with a P5 & P8. Rotate so connector bars are on the ground. Hold.



4

Add last 3 bottom corners (P2) then insert a P5 & P8 at correct location. Move chocks (P6) to width (B) then tighten with 3" short bolts (P7).



5

Repeat Step 1. Add second top section to achieve required height (A). Tighten chock. Add 12 x 6" long bolts (P5) along the top for PipeSak® filling loops.



Pipeline Protection

20"-48" Frame Assembly



Assemble top section.



Lay out bottom corners.



Attached bottom corners.



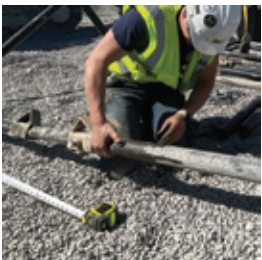
Add center bars and chocks.



Stand first side up. Hold.



Add bottom corners then second top section.



Measure as you go.



Tighten bolts.



Add filling loop bolts.



Complete.

It is recommended that this frame be assembled and disassembled with a minimum of 3 people. To assist with stubborn pieces, lubricants may be used. Ensure bolts are tight and pins are secure before using. Please contact PipeSak Inc. if you have any questions at 1-866-747-3725.

STEP 1:

Assemble the first top section by sliding 2 top corners (P1) onto a center tee (P3). **Add 1 chock (P6) with a 3" bolt (P7) to the bottom part of the "T".** Save the long bolts for the PipeSak® filling loops.

STEP 2:

Add 3 bottom corners (P2). Measure to achieve the required height (A). Tighten center chock using a short 3" bolt (P7) and use a P5 & P8 to attach each corner.

STEP 3:

With this section still on the ground, slide in 3 connector bars (P4). **Add 2 chocks (P6) with short 3" bolts to the outer two bars only** and use a P5 & P8 to attach each bar at the selected width.

STEP 4:

Once the connector bars have been attached, stand this side up to add the final 3 bottom corners on the other side. Adjust the corners to achieve required width (B) between chocks then tighten with shorts bolts (P7).

TIPS: Lay a measuring tape down beside the connector bars and adjust each one a little bit at a time.

STEP 5:

Repeat Step 1 to create a second top section. **Remember to add the last chock to the tee (P3) before putting it on.** This top section must be assembled before adding it to the rest of the frame. Achieve the desired height (A). Tighten final chock.

Finally, add the 12 x 6" bolts (P5) along the top for the PipeSak® filling loops and check full frame width (C).

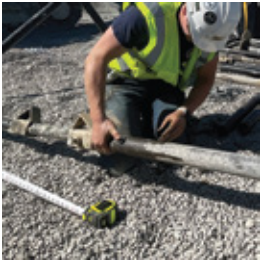




Pipeline Protection

20"-48" Frame Disassembly

It is recommended that this frame be assembled and disassembled with a minimum of 3 people. For the easiest disassembly, the frame must be square. To assist with stubborn pieces, lubricants may be used. Ensure bolts are tight and pins are secure before beginning disassembly. Please contact PipeSak Inc. if you have any questions at 1-866-747-3725.



1) Loosen one side



2) Pull sides apart



3) Lay sides down



4) Remove connectors



5) Remove bottom corners



6) Remove final parts



COUNT THE PARTS:

15x pieces of tubing
10x nuts
30x bolts
6x chocks

STEP 1:

Remove the 3x P5 & P8 nuts and bolts from only one side of the bottom connector bars (P4). **WARNING: This will make the frame unstable.**

STEP 2:

Pull to separate the connector bars (P4x3) from one side of the bottom corners (P2) with at least one person holding each side of the frame. Brace for separation.

STEP 3:

Lay both halves down so that the center "T"s (P3) lay on the ground and all bottom corners (P2) point upward.

STEP 4:

Remove connector bar nuts and bolts (3x P5 & P8), and chocks (P6x4). Pull out connector bars (P4x3). Set aside.

STEP 5:

Remove all bottom corner P5s and P8s then pull out all bottom corners (P2x6). Set aside. Remove two remaining chocks (P6x2) and bolts (P7x2) from the center T (P3).

STEP 6:

Remove final nuts and bolts and all filling loop bolts (P5x12). Then pull out all top corners (P1x4). **Count all parts before repacking. Repack as shown.**

REPACK AS SHOWN:

- 1) Neatly stack all frame corners (2 stacks of 4).
- 2) Add the "T"s, connector bars, and chocks.
- 3) Put all nuts (10x) and (bolts (30x) in a bag then back into the crate.
- 4) Screw the lid back on.

Disclaimer: PipeSak Inc. has provided these instructions as a guide to assist with assembly and disassembly but assumes no responsibility or liability for any injuries, errors, or failures. Please contact PipeSak Inc. for more information.

1-866-PIPESAK (747-3725) | PIPESAK.COM



Scan for more PipeSak resources

PS-TECH-014-REV3-FEB-25

3/3