



PipeSak® Pipeline Products

Technical Notes

# DEPTH OF COVER AND PIPESAK® GEOTEXTILE WEIGHTS

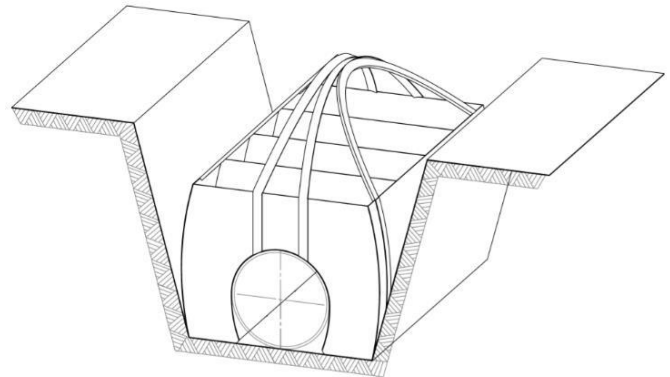
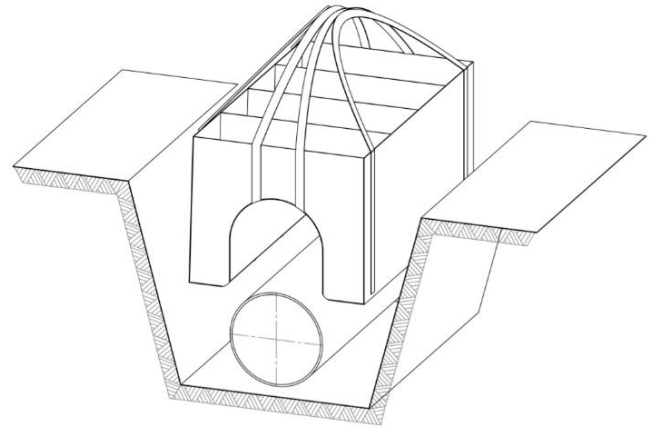
Pipeline installation specifications often call for a pipeline’s depth of cover to be taken from the top of the pipe or any buried appurtenance like valves, fittings or... concrete weights.

Over the life of a pipeline, if anything from the surface (a farmer’s plow, third-party excavator etc.) makes contact with a concrete weight there is a high likelihood the weight will be tipped and damage the pipe.

PipeSak® Geotextile Fabric Weights are soft with only webbing, fabric and loose gravel exposed to potential contact. If an object from the surface encounters a PipeSak weight, the force is not transferred into the pipeline.

PipeSak could be considered an advanced warning system for anyone digging too close to the pipe and should not require extra depth of cover.

PipeSak Buoyancy Control System allows for a shallower trench and benefits owners, engineers, and contractors by creating a safer less expensive installation.



Installation is safe and simple. Fill the PipeSak® weight with aggregate from a local source; distribute along the right of way; lower over the pipeline; and back-fill. PipeSak’s can be installed with a single lift hook and can be released without workers in the trench.