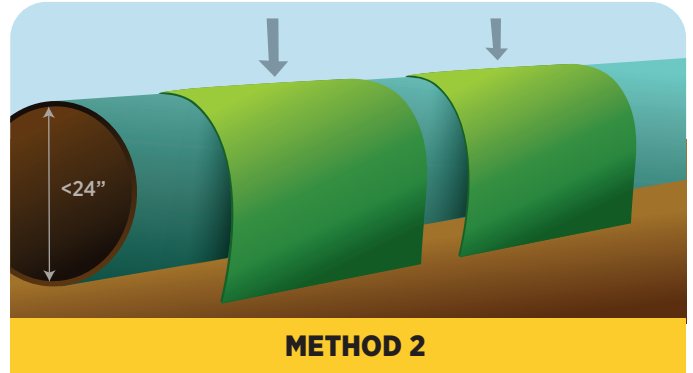


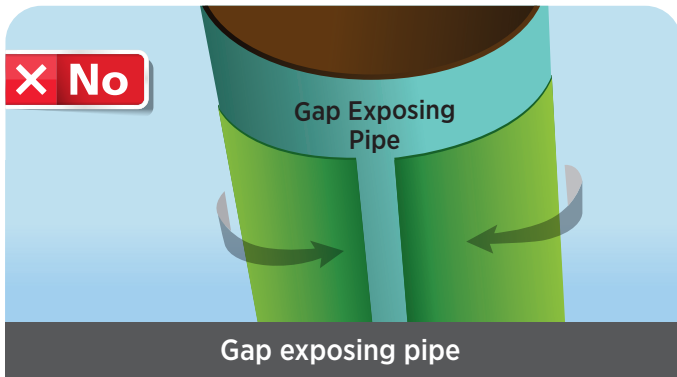
METHOD 1

Less than 24" OD - PipeJacket™ supplied in rolls

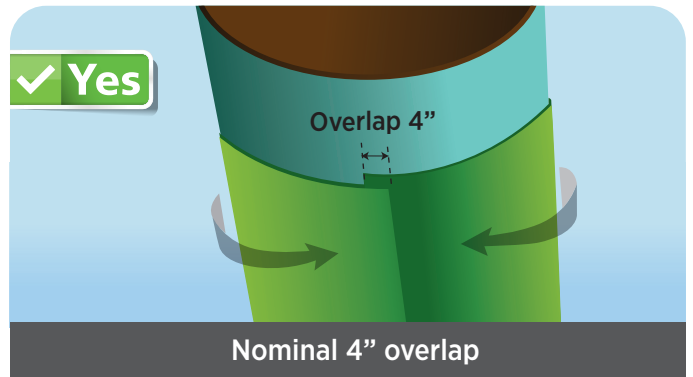


METHOD 2

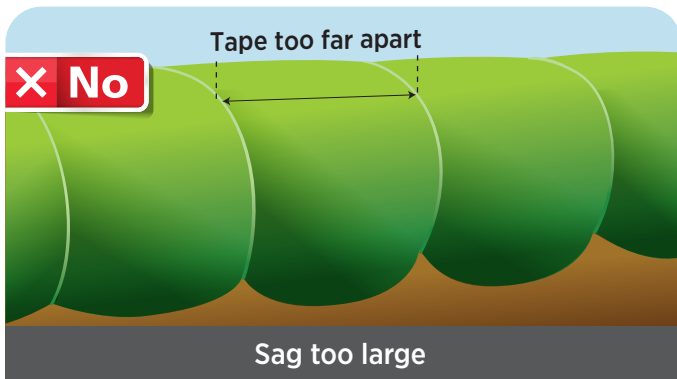
24" OD and greater - PipeJacket™ supplied in pads



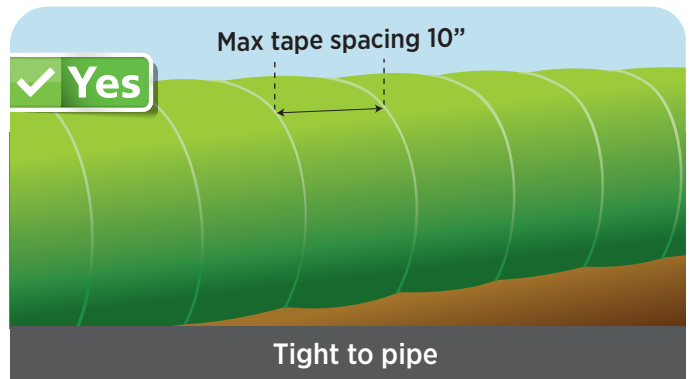
Gap exposing pipe



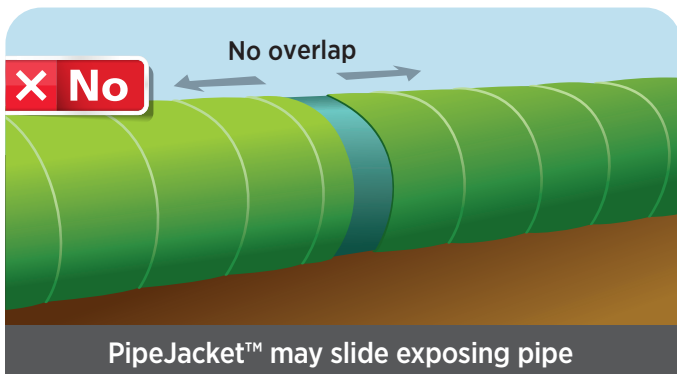
Nominal 4" overlap



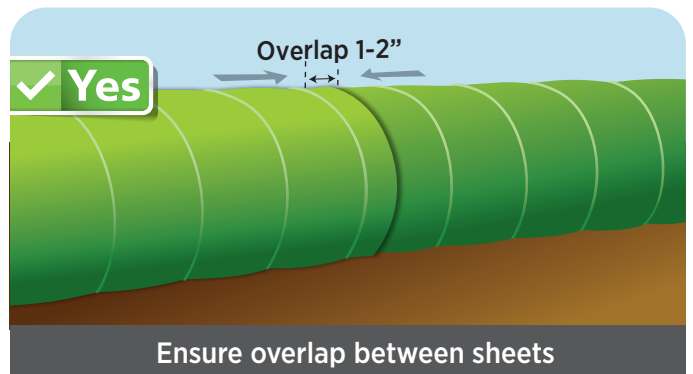
Sag too large



Tight to pipe



PipeJacket™ may slide exposing pipe



Ensure overlap between sheets



Installation Methods



Pipeline Products
and Services

Safety and Risk Mitigation

When working in pipeline environments, proper safety precautions must be undertaken. Workers must wear appropriate PPE and be vigilant toward machinery used for installation, tripping hazards and potential fire hazards when working with PipeJacket™. All workers must be trained with installation methods prior to use and understand site specific safety precautions and potential hazards.